

Balanced Buck-Boost Switching Converter to Reduce Common-Mode Conducted Noise

Masahito Shoyama*, Masashi Ohba, and Tamotsu Ninomiya

Dept. of Electrical and Electronic Systems Eng , Kyushu University, Japan

ABSTRACT

Because conventional switching converters have been usually using unbalanced circuit topologies, parasitic capacitance between the drain/collector of an active switch and the frame ground through its heat sink may generate the common-mode conducted noise. We have proposed a balanced switching converter circuit, which is an effective way to reduce the common-mode conducted noise. As an example, a boost converter version of the balanced switching converter was presented and the mechanism of the common-mode noise reduction was explained using equivalent circuits. This paper extends the concept of the balanced switching converter circuit and presents a buck-boost converter version of the balanced switching converter. The feature of common-mode noise reduction is confirmed by experimental results and the mechanism of the common-mode noise reduction is explained using equivalent circuits.

Key Words: Common-mode conducted noise, Balanced circuit, Buck-boost switching converter

1. Introduction

Common-mode conducted noise in switching converters frequently causes radiated noise emission from their power cord, so it is important to reduce this noise to meet EMC. Because conventional switching converters have been usually using unbalanced circuit topologies, parasitic capacitance between drain/collector of an active switch and the frame ground through its heat sink may generate the common-mode conducted noise. To cope with this problem an idea of using auxiliary anti-phase winding has been presented [1].

We have also proposed a balanced switching converter circuit, which is an alternative way to reduce the common-mode conducted noise.

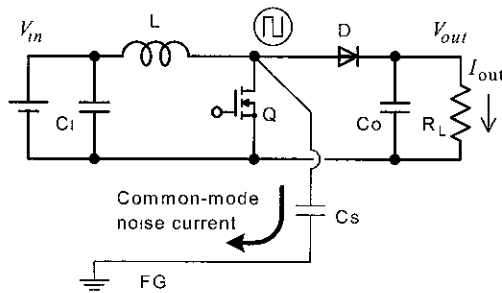
As an example, a boost converter version of the balanced switching converter was presented and the mechanism of the common-mode noise reduction was explained using equivalent circuits [2].

This paper extends the concept of the balanced switching converter circuit and presents a buck-boost converter version of the balanced switching converter. The feature of common-mode noise reduction is confirmed by experimental results and the mechanism of the common-mode noise reduction is explained using equivalent circuits.

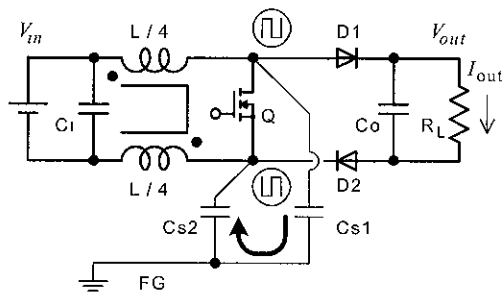
2. Review of Balanced Boost Converter Circuit [2]

Fig. 1 (a) shows a conventional unbalanced boost converter circuit. This topology is often used as a PFC converter, where the MOS-FET Q switches a boosted high voltage of several hundred volts.

Manuscript received January 8, 2002, revised April 29, 2002
Corresponding Author: shoyama@ees.kyushu-u.ac.jp,
Tel: +81-92-642-3902, Fax: +81-92-642-3957



(a) Conventional unbalanced boost converter

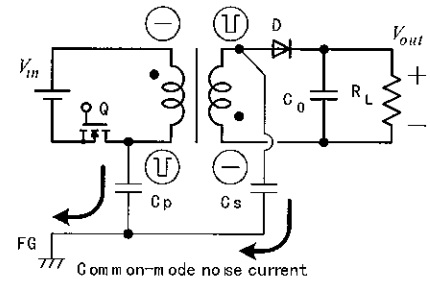


(b) Proposed balanced boost converter [2]

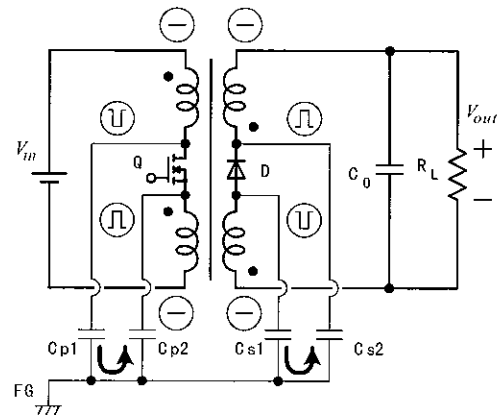
Fig 1 Common-mode noise reduction by balanced boost converter

A heat sink is usually used with the MOS-FET, so the parasitic capacitance C_s is formed between the drain of the MOS-FET and the frame ground FG through its heat sink. In the case where a small size and a low profile are strongly required to the converter, the metal frame ground itself may be used as a heat sink, so that C_s becomes very large. In the unbalanced boost converter, the source voltage of the MOS-FET is almost constant to the frame ground voltage level even in the switching time. On the other hand, the drain voltage changes very rapidly in the switching time, so a large current pulse flows through the parasitic capacitance C_s . Consequently this causes the large common-mode noise current to lead to serious problems.

In order to solve this problem, we proposed a balanced switching converter circuit as shown in Fig. 1 (b). Its basic circuit operation is essentially the same as that of the conventional unbalanced boost converter. The winding of the inductor is equally split into two parts, thus the total winding turns are the same as those of the conventional unbalanced boost converter. In the balanced boost converter, the drain voltage and the source voltage of the



(a) Conventional unbalanced buck-boost converter



(b) Conventional unbalanced buck-boost converter

Fig 2 Common-mode noise reduction by balanced buck-boost converter

MOS-FET change complementarily, that is, by the same amount but in an opposite polarity in the switching time. This is ideally performed by the equally split winding inductor. As a result, the common-mode conducted noise is much reduced by this balanced circuit topology.

In the case where the parasitic capacitances $Cs1$ and $Cs2$ are not exactly the same, an auxiliary capacitance can be added to equalize their values and to cancel their noise currents. Actually, the parasitic capacitance between the cathode of $D2$ and the frame ground can be used as a part of $Cs2$.

3. Balanced Buck-Boost Converter Circuit

By extending the concept of the balanced switching converter circuit to a buck-boost converter, reduction in the common-mode conducted noise is realized. Two kinds of buck-boost converter topologies are compared in Fig 2, where (a) is a conventional unbalanced converter and (b) is a proposed balanced converter.

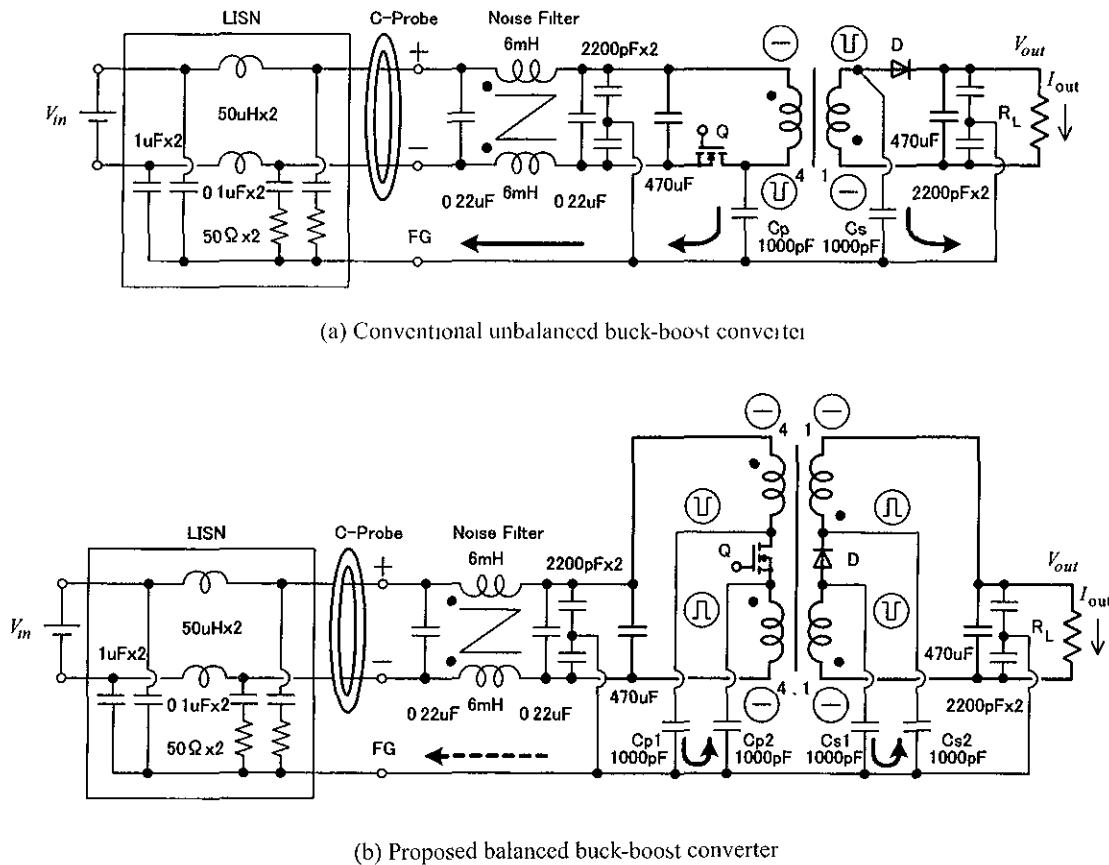


Fig. 3 Experimental circuits for common-mode noise current measurement. Conditions $f_s = 100kHz$, $D = 0.3$, $V_{in} = 50V$, $V_{out} = 5V$, $I_{out} = 1A$. (A high frequency current probe (C-Probe) was used to sense the common-mode noise current.)

The basic circuit operation as a buck-boost converter is the same for these two topologies, but they are different in the common-mode noise generation. In the conventional buck-boost converter (a), the parasitic capacitance C_p between the drain of the main switch Q and the frame ground FG through its heat sink may generate the common-mode conducted noise to lead to serious problems. In addition, the parasitic capacitance C_s between the anode of the secondary diode D and the frame ground may also generate the common-mode conducted noise.

On the other hand, in the balanced buck-boost converter (b), the drain voltage and the source voltage of Q change by the same amount but in an opposite polarity in the switching time. This is ideally performed by the equally split primary winding. As a result, the common-mode conducted noise is reduced by this balanced circuit topology. In the case where the parasitic capacitances C_{p1} and C_{p2} are not the same value, an auxiliary capacitance

can be added to equalize their values and to cancel their noise currents.

In the secondary side of the transformer, the anode voltage and the cathode voltage of D change by the same amount but in an opposite polarity in the switching time. This is ideally performed by the equally split secondary winding. As a result, the common-mode conducted noise is reduced by this balanced circuit topology too. In the case where the parasitic capacitances C_{s1} and C_{s2} are not the same value, an auxiliary capacitance can be added to equalize their values and to cancel their noise currents.

4. Confirmation of Common-Mode Noise Reduction by Experiments

In order to confirm the noise characteristics of the balanced converter, we made two kinds of buck-boost converter circuits as shown in Fig. 3, where (a) is the conventional unbalanced converter and (b) is the proposed

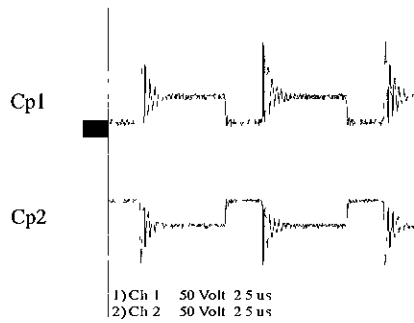


Fig 4 Voltage waveforms of Cp1 (upper) and Cp2 (lower)

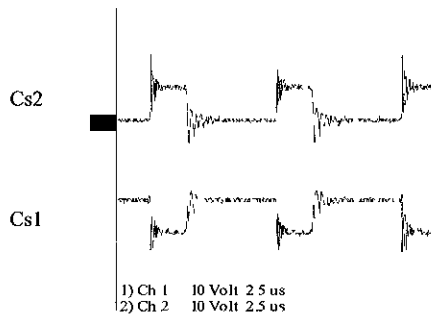
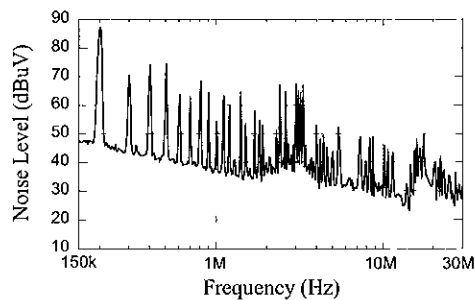
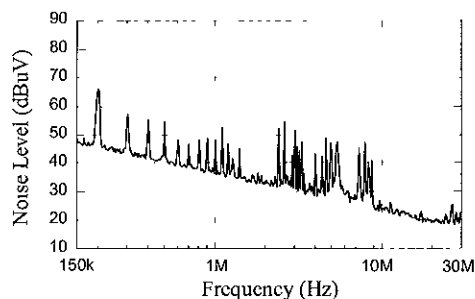


Fig 5 Voltage waveforms of Cs2 (upper) and Cs1 (lower)



(a) Conventional unbalanced buck-boost converter



(b) Proposed balanced buck-boost converter

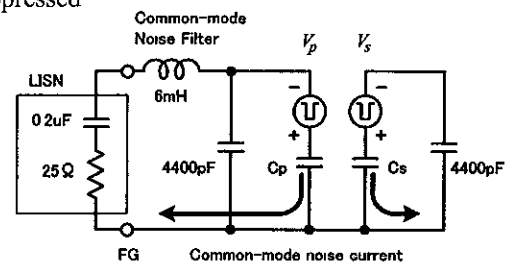
Fig 6. Experimental results (150kHz-30MHz) The upper trace is for the conventional unbalanced converter and the lower trace is for the proposed balanced converter Noise levels are converted to the voltage across an equivalent terminator of 25 ohms

balanced converter. We used a LISN (Line Impedance Stabilizing Network) to standardize the input impedance seen from the converter input. A high-frequency current probe (C-Probe) is used to sense the common-mode noise current, which is measured by a spectrum analyzer.

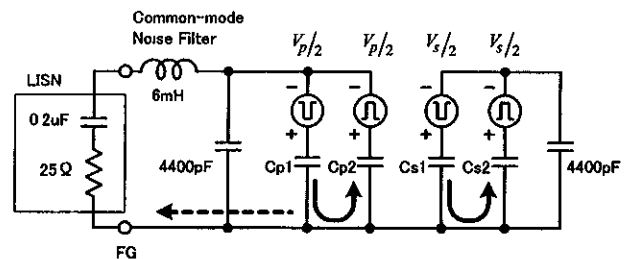
Fig. 4 illustrates that the drain voltage and the source voltage of Q change by the same amount but in an opposite polarity in the switching time Fig. 5 illustrates that the anode voltage and the cathode voltage of D change by the same amount but in an opposite polarity in the switching time

Fig 6 shows experimental results, (a) is for the conventional unbalanced converter and (b) is for the proposed balanced converter. Comparing these two figures, it is found that the common-mode conducted noise is much reduced in the balanced converter

In order to explain the advantage of the balanced converter, these two buck-boost converters are compared with their equivalent circuits in Fig. 7 from the viewpoint of the current path in the switching time In the conventional unbalanced converter (a), the common-mode noise is generated by a rapid voltage change in the parasitic capacitance Cp and Cs. On the other hand, in the balanced converter (b), the current through Cp1 is absorbed by Cp2 and the current through Cs1 is absorbed by Cs2, and so the common-mode noise are well suppressed



(a) Conventional unbalanced buck-boost converter



(b) Proposed balanced buck-boost converter

Fig 7 Mechanism of common-mode noise reduction in the balanced buck-boost converter

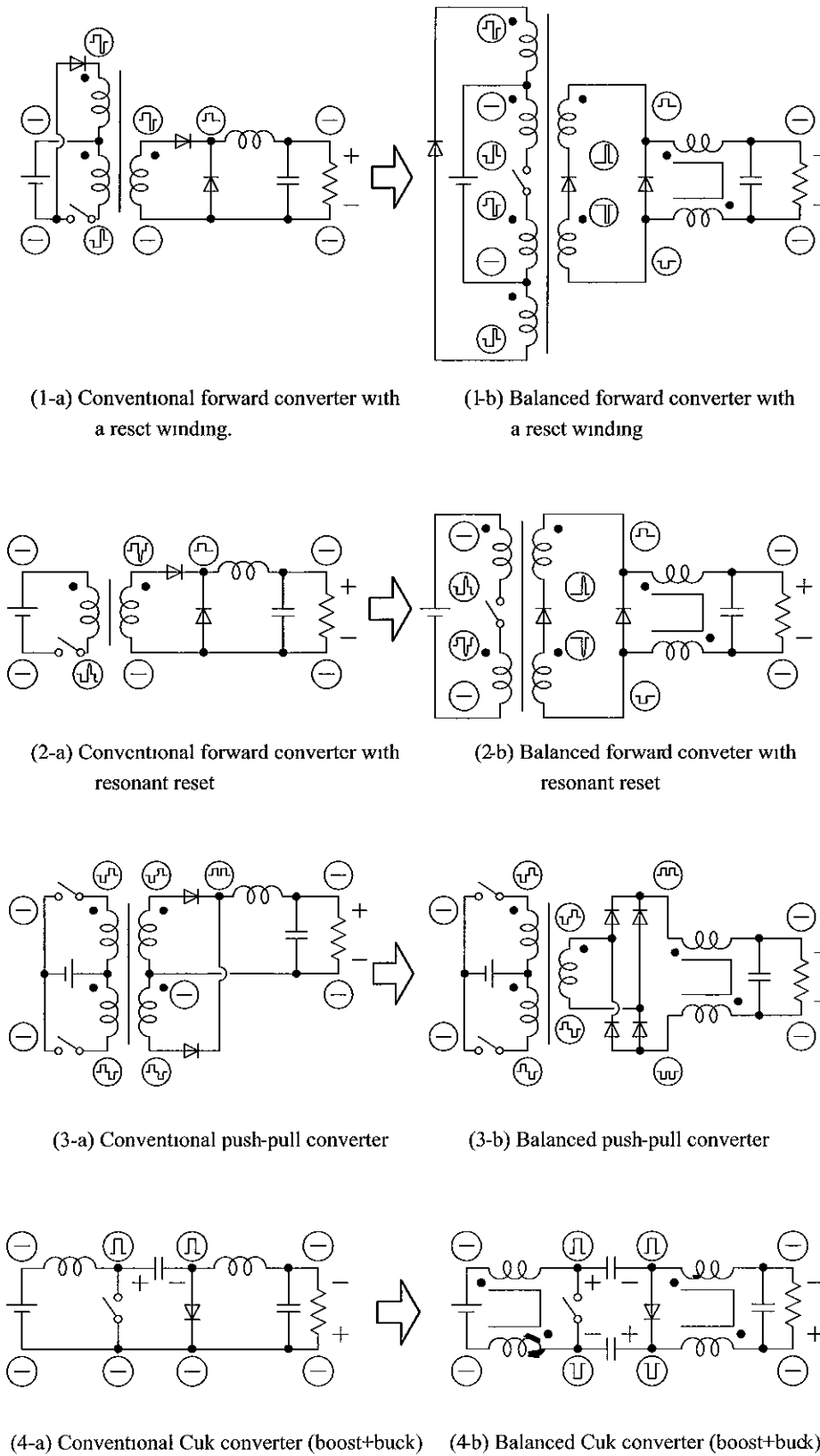


Fig 8 Examples of conversion from conventional into balanced switching converters

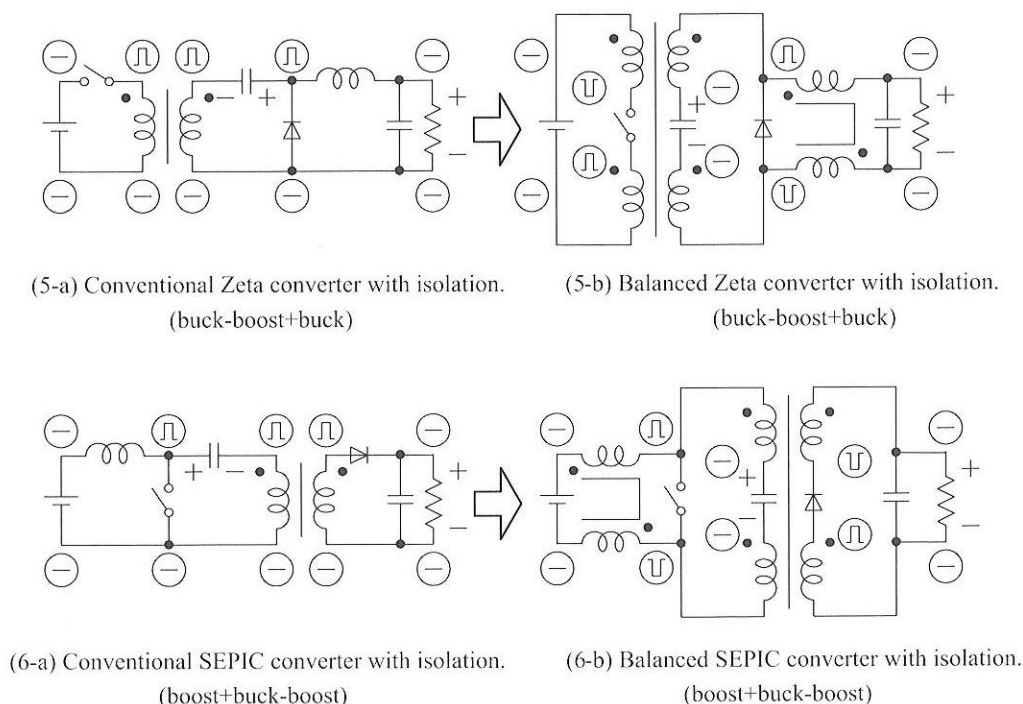


Fig. 8 (continue). Examples of conversion from conventional into balanced switching converters.

5. Application to Other Types of Switching Converter

The concept of the balanced switching converter is applied to some other types of switching converter as shown in Fig. 8. This concept can be applied to any switching converter topologies. Practically, such topologies with one active switch are desirable, because they do not suffer from a large common-mode noise current due to a slight difference in the timing of the plural active switches in the case where those plural active switches are supposed to operate simultaneously.

6. Conclusion

A buck-boost converter version of the balanced switching converter was presented and the mechanism of the common-mode noise reduction was explained using equivalent circuits. This good feature was confirmed by experimental results. The concept of the balanced switching converter was applied to some other types of switching converter. Detailed noise analysis will be presented in another paper.

References

- [1] W. Xin, M.H. Pong, Z.Y. Lu, and Z.M. Qian, "Novel Boost PFC with Low Common Mode EMI: Modeling and Design", *Proc. of IEEE APEC 2000*, pp. 178~181, Feb. 2000.
- [2] M. Shoyama, T. Okunaga, G. Li, and T. Ninomiya, "Balanced Switching Converter to Reduce Common-Mode Conducted Noise", *IEEE PESC 2001 Record*, pp. 451~456, Jun. 2001.



Masahito Shoyama received the B. S. degree in electrical engineering and the Dr. Eng. degree from Kyushu University, Fukuoka, Japan, in 1981 and 1986, respectively. He joined the Dept. of Electronics, Kyushu University as a Research Associate in 1986, and he had been an Associate Professor since 1990. Since 1996 he has been with the Dept. of Electrical and Electronic Systems Engineering, Kyushu University. He has been active in the fields of power electronics, especially in high-frequency switching power supplies, power factor correctors, piezoelectric power converters, and electromagnetic compatibility (EMC). Dr. Shoyama is a member of IEEE and IEICE of Japan.



Masashi Ohba received the B. S. degree in electrical engineering and computer science from Kyushu University, Fukuoka, Japan, in 2001. He is now a graduate student in the Dept. of Electrical and Electronic Systems Engineering, Kyushu University. He has been

active in the field of EMC in switching power supplies.



Tamotsu Ninomiya received the B.E., M.E., and Dr.Eng. degrees in electronics from Kyushu University, Fukuoka, Japan, in 1967, 1969, and 1981, respectively. Since 1969 he has been associated with the Department of Electronics, Kyushu University, first as Research Assistant and since 1988 as

Professor. Since the re-organization in 1996, he has been a Professor in the Department of Electrical and Electronic Systems Engineering of the Graduate School of Information Science and Electrical Engineering.

He has been a specialist in the field of power electronics, including the analysis of switching power converters and their electromagnetic interference problems, the development of noise suppression techniques, and the piezoelectric-transformer converters. He has published more than one hundred and eighty technical papers.

He has served as a member of Program Committee and Session Chairman at Power Electronics Specialists Conference (PESC) sponsored by IEEE Power Electronics Society (PELS) for many years. In particular, he was Program Vice Chairman in 1988 PESC, and General Chairman in 1998 PESC. He was a member of the Administrative Committee of IEEE PELS from 1993 through 1998. In January 2001, he was awarded as IEEE Fellow. For Japanese Institutes, he served as Chairman of the Professional Group on High-Frequency Applied Magnetics of the Institute of Electrical Engineers of Japan (IEEJ), Chairman of the Technical Group on Power Engineering in Electronics and Communications of the Institute of Electronics, Information, and Communication Engineers (IEICE), and an Associate Editor of IEICE Transactions on Communications.