

High Step-Down Multiple-Output LED Driver with the Current Auto-Balance Characteristic

Quanming Luo[†], Binxin Zhu^{*}, Weiguo Lu^{*}, and Luowei Zhou^{*}

^{†*}State Key Laboratory of Power Transmission Equipment & System Security and New Technology, Chongqing University, Chongqing, China

Abstract

A high step-down multiple-output LED driver is proposed in this paper. Firstly, the derivation of the driver with dual-output is presented and its operation principle and steady state performance are analyzed in detail. Secondly, a high step-down N -channel LED driver is proposed and its current auto-balance characteristic and step-down ratio are analyzed. Finally, an experimental prototype is built and the experimental results are given. The theoretical analysis and experimental results show that the proposed driver has the following virtues: First, if load balancing is achieved, the voltage gain is $1/N$ that of a Buck driver, where N is the number of channels. Second, each output automatically has an equal output current, without requiring more current close-loop control circuits than a Buck driver. Last, the voltage stresses of the switches and diodes are lower than those of a Buck driver, meaning that lower voltage switches and diodes can be used, and a higher efficiency can be expected.

Key words: DF buck, One cycle controller, Small signal model

I. INTRODUCTION

Due to the enormous progress recently achieved in solid-state lighting technology and its potential virtues of high efficiency, environmental friendliness, long lifetime, small size, etc, LEDs have been regarded as a promising technology to replace the energy-inefficient incandescent lamps and mercury-based fluorescent lamps [1]-[4]. LED drivers occupy an important place in the whole LED lighting system, and they have become a research hotspot in the field of power electronics [5]-[16]. When a LED driver utilize an ac voltage source as its input, the “classical” two-stage structure shown in Fig.1 is always adopted. This two-stage structure is composed of a PFC pre-regulator and a current regulator. The PFC pre-regulator is needed to convert the AC voltage to a regulated DC voltage. A high power factor and low-input-current harmonics are becoming mandatory design criteria. The current regulator is needed to drive LEDs with a constant current regardless of the number of LEDs. In this paper, the research focuses on the topology of the current regulator.

Although some of the trends in commercial LEDs are

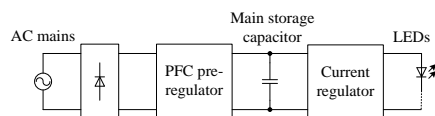


Fig. 1. Classical two-stage structure of LED driver.

towards high power, high current devices, a large number of LEDs arranged in series, in parallel, or in a series and parallel combination are adopted in high power applications [14]-[16]. As the brightness of LEDs is directly related to their current, it is an effective way to ensure that each LED produces a similar light output by connecting all of the LEDs in series. However, the reliability of this arrangement is limited because the whole string of LEDs fails if one of them is damaged. On the other hand, the simple paralleling of LEDs is not desirable due to the current sharing related to both the LED's exponential voltage-current characteristic and the negative temperature coefficient of the LED's forward voltage drop [17]. There are several methods for driving multiple strings connected in parallel. A straightforward approach is to employ a current regulator for each string, where the current regulator can be of the linear or switch-mode type. Employing linear regulators suffers from poor operating efficiency. Employing a more efficient switch-mode regulator to drive each LED string can overcome the drawback of linear regulators. However, they have a higher component count and cost. As a result, a switch-mode current regulator with multi-outputs may be a

Manuscript received Mar. 16, 2011; revised Apr. 26, 2012

Recommended for publication by Associate Editor Honnyong Cha.

[†]Corresponding Author: lqm394@126.com

Tel: +86-023-6510-3558, Fax: +86-023-6510-3558, Chongqing Univ.

^{*}State Key Laboratory of Power Transmission Equipment & System Security and New Technology, Chongqing University, China

preferred choice.

The output voltage of the PFC pre-regulator is always around 400V for a 220V AC system, while the voltage across the LED string is always below 40V limited by its cumulative voltage drop and reliability consideration. This means that the step-down ratio of the current regulator is above 10. How to realize this high step-down current regulator with high performance is an issue that must be solved. Theoretically, if the duty cycle D is close to zero, the step-down ratio of a Buck converter is extremely small. However, there are some limitations related to the Buck converters in high step-down conversion: 1) the voltage stress and current stress of the switches and diodes are quite large, which makes a low-voltage high-performance devices unsuitable; 2) the switching loss is large, which results in low efficiency; 3) the electromagnetic interference (EMI) noise is serious; 4) the transient response is limited by the small turn-on interval of the switches. To avoid an extremely small duty cycle, isolated type DC/DC converters may be employed, such as Flyback converter, Forward converter, Half-bridge converter, Full-bridge converter, etc. However, these isolated topologies are complicated when compared with a Buck converter. In addition, the leakage inductor of the transformer always results in large voltage stress and severe EMI. A center-tapped Buck converter maybe a good choice because of its simple topology [18]. However, because the leakage inductor of the center-tapped inductor always exists, the potential problem described above is unavoidable. Active clamp circuits can recover the leakage energy effectively and reduce the voltage stress of the switches [19]-[21]. However, the topology is then further complicated and additional losses related to these active clamp circuit exists. In [22], a LED driver circuit with series-input-connected converter cells was proposed. Since all of the converter cells are driven by the same duty cycle, the input voltage for each of the cells is balanced and the output currents are identical. Furthermore, the voltage stresses are lowered and low-voltage high-performance devices are used so higher efficiency can be expected. However, it is impossible to turn on and turn off these switches at the exact same time, which leads to unevenness of the voltage stress. Therefore, the reliability is reduced. Additionally, the interactive influence among these converter cells makes it difficult to design the loop compensator.

In this paper, a high step-down multiple-output LED driver is proposed. This driver has the following potential virtues: 1) if the loads for each output are equal, namely, the number of LEDs for each string is the same, the voltage gain is $1/N$ that of a Buck driver, where N means the number of the output channels, thus avoiding an extremely small duty cycle; 2) the currents for each of the outputs are shared automatically if the duty cycle is the same, thus only one current close-loop control circuit is needed, and the current auto-balance characteristic is not affected by the number of LEDs per string; 3) the voltage

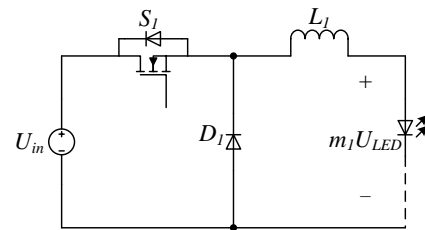


Fig. 2. Buck driver.

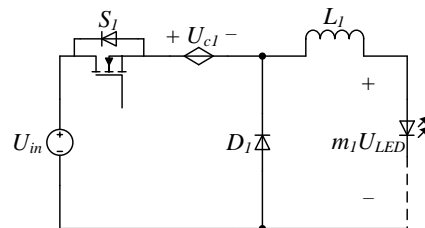


Fig. 3. Buck driver with controllable voltage source.

stress of the switches is lower than that of Buck drivers, thus low voltage switches are suitable and high efficiency is expected.

This paper is organized as follows. The derivation of the high step-down two-output driver is presented in Section II. In section III, the operation principle of the proposed two-output driver is illustrated. A steady state performance analysis is presented in Section IV. In Section V, the high step-down N-channel driver is given and analyzed. Experimental results with a 30W 400V-input three-channel prototype are given in Section VI. Section VII summarizes the conclusions drawn from the investigation.

II. TOPOLOGY DERIVATION

The topology of buck driver is shown in Fig.2. Assume that the normal voltage across each of the LEDs is U_{LED} and that the number of the series connected LEDs is m_1 . Therefore, the output voltage is denoted as $m_1 U_{LED}$. When operating in continuous conduction mode and in the steady state, the step-down ratio (M_1) can be represented as:

$$M_1 = \frac{m_1 U_{LED}}{U_{in}} = D \quad (1)$$

where D is the duty cycle.

In order to realize the high step-down ratio, a controllable voltage source can be inserted, as shown in Fig.3. According to the voltage-second balance requirement of inductor L_I , its step-down ratio can be derived as:

$$M_1 = \frac{m_1 U_{LED}}{U_{in}} = \left(1 - \frac{U_{cl}}{U_{in}} \right) D \quad (2)$$

From (2), a higher step-down ratio than the Buck driver is realized provided that U_{cl} is greater than zero and smaller than

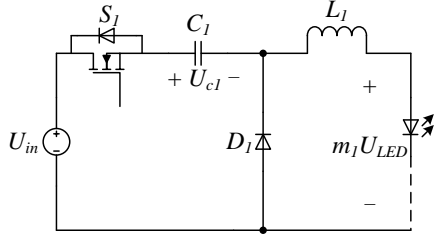
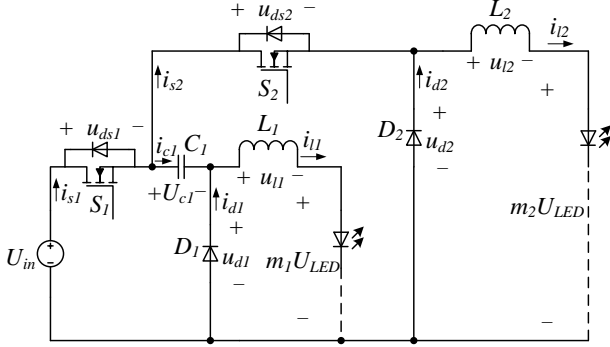

 Fig. 4. Controllable voltage source substituted by capacitor C_1 .


Fig. 5. High step-down two-output driver.

U_{in} .

It is well known that a capacitor can be treated as a voltage source provided that the ripple of the voltage across the capacitor can be neglected when compared with its dc value. Nonetheless, if the controllable voltage source is substituted directly by a capacitor, C_1 , as shown in Fig.4, the converter can not operate in the steady state because it is impossible to satisfy the ampere-second balance requirement of capacitor C_1 during one switching period T_s . Then the voltage across the capacitor (U_{c1}) becomes higher and higher until eventually, the driver is damaged.

According to Fig.4, when switch S_1 is OFF and diode D_1 is kept ON, capacitor C_1 can be treated as the input voltage source of another buck converter, as shown in Fig.5. When switch S_1 is ON and S_2 is OFF, capacitor C_1 is charged. When switch S_1 is OFF and S_2 is ON, capacitor C_1 is discharged. Therefore, it is possible to satisfy the ampere-second balance requirement of C_1 in one switching period T_s . In the following section, the operating principle of the driver, shown in Fig.5, will be analyzed in detail.

III. OPERATING PRINCIPLE

To simplify the analysis, the following assumptions are made:

- 1) The switching-frequency current ripples of i_{L1} and i_{L2} are much smaller than their dc values, I_{L1} and I_{L2} respectively.
- 2) All of the components are ideal, and all of the parasitic parameters are neglected.
- 3) The driving signals of S_1 and S_2 are interleaved with

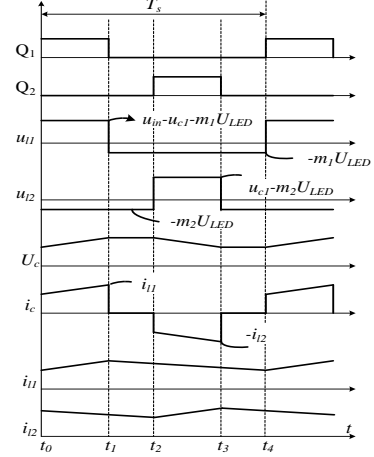


Fig. 6. Key waveforms of the proposed driver.

a 180° phase shift and their duty cycle D is smaller than 0.5.

The key waveforms of the proposed driver are shown in Fig.6. There are four stages in one switching period. The corresponding equivalent circuits for each stage are shown in Fig. 7.

Stage 1 [$t_0 < t < t_1$ see Fig. 7(a)]: This stage starts by turning switch S_1 on. As a result, diode D_1 is reverse-biased. Switch S_2 is OFF and diode D_2 conducts current i_{12} . The voltage across L_1 , u_{11} , is equal to $U_{in} - U_{c1} - m_1 U_{LED}$, which makes i_{11} linearly increase at a slope of $(U_{in} - U_{c1} - m_1 U_{LED})/L_1$. As diode D_2 is in the conduction state, inductor L_2 bears a voltage of $m_2 U_{LED}$, and the falling rate of i_{12} is $m_2 U_{LED}/L_2$. In this stage, capacitor C_1 is charged by i_{11} .

Stage 2 [$t_1 < t < t_2$ see Fig. 7(b)]: Switch S_1 is gated off at t_1 , diode D_1 conducts to carry current i_{11} , switch S_2 is OFF and diode D_2 is ON as in the former stage. During this interval, inductors L_1 and L_2 are discharged by $m_1 U_{LED}$ and $m_2 U_{LED}$ respectively. Current i_{11} decreases from its maximum value at a slope of $m_1 U_{LED}/L_1$, and current i_{12} decreases to its minimum value at a slope of $m_2 U_{LED}/L_2$. The current through capacitor C_1 , i_{c1} , is zero and U_{c1} is kept constant throughout this stage.

Stage 3 [$t_2 < t < t_3$ see Fig.7(c)]: At time t_2 , switch S_2 is gated ON and diode D_2 is blocked. Switch S_1 is kept OFF and diode D_1 is ON throughout the whole stage. Current i_{12} increases from its minimum value to its maximum value linearly with a slope of $(U_{c1} - m_2 U_{LED})/L_1$, and capacitor C_1 is discharged by i_{12} during this interval. Current i_{11} continue to decrease with a slope of $m_1 U_{LED}/L_1$ in this stage. This interval ends when S_2 turns off at t_3 .

Stage 4 [$t_3 < t < t_4$ see Fig.7(b)]: The equivalent circuit of this stage is same as stage 2. Switches S_1 and S_2 are OFF and diodes D_1 and D_2 are ON. Current i_{11} decreases linearly to its

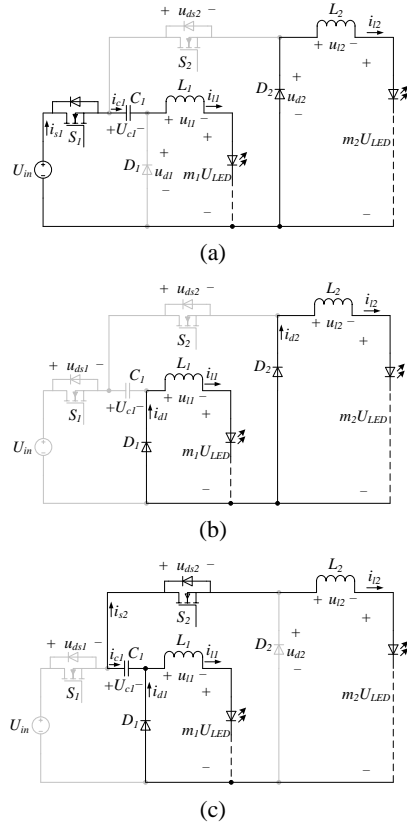


Fig. 7. Equivalent circuits for each stage during one switching cycle. (a) Stage 1. (b) Stage 2 and stage 4. (c) Stage 3.

minimum value at time t_4 and current i_{l2} begins to decrease at time t_3 . The decreasing rates of i_{l1} and i_{l2} are $m_1 U_{LED}/L_1$ and $m_2 U_{LED}/L_2$ respectively. This is the end of the switching cycle.

IV. STEADY PERFORMANCE ANALYSIS

A. Current Auto-balance Characteristic

In one switching period, capacitor C_1 is charged by current i_{l1} when switch S_1 is ON and switch S_2 is OFF. The charging time is DT_s . When S_1 is gated OFF and S_2 is turned ON, capacitor C_1 is discharged by current i_{l2} and the discharging time is also DT_s because the driving signals of S_1 and S_2 are interleaved with the same duty cycle D . In steady state operation, the switching frequency ripples of i_{l1} and i_{l2} are ignored and their dc values are assumed to be I_{l1} and I_{l2} , respectively. According to the ampere-second balance requirement of capacitor C_1 , the following equation can be deduced:

$$DT_s I_{l1} = DT_s I_{l2} \quad (3)$$

$$I_{l1} = I_{l2} \quad (4)$$

From (3) or (4), only one current close-loop control circuit is needed to keep the two output currents equal. In other

words, if current I_{l1} is controlled to be the nominal current of the LED, I_{LED} , current I_{l2} will automatically be I_{LED} .

B. Step-down Ratio

Applying the voltage-second balance requirement on L_1 and L_2 , the following equations are deduced:

$$D(U_{in} - U_{c1} - m_1 U_{LED}) = (1-D)m_1 U_{LED} \quad (5)$$

$$D(U_{c1} - m_2 U_{LED}) = (1-D)m_2 U_{LED} \quad (6)$$

Assume that the step-down ratios of the first and second output are M_1 and M_2 respectively, the ratio of the capacitor voltage U_{c1} and the input voltage U_{in} is M_{c1} , namely:

$$M_1 = \frac{m_1 U_{LED}}{U_{in}} \quad (7)$$

$$M_2 = \frac{m_2 U_{LED}}{U_{in}} \quad (8)$$

$$M_{c1} = \frac{U_{c1}}{U_{in}} \quad (9)$$

From (5) to (9), the following equations are deduced:

$$M_1 + M_2 = D \quad (10)$$

$$M_{c1} = \frac{M_2}{D} \quad (11)$$

When the number of LEDs for each string is the same, namely, $m_1 = m_2$, the following equations are deduced:

$$M_1 = M_2 = \frac{D}{2} \quad (12)$$

$$M_{c1} = \frac{1}{2} \quad (13)$$

From (12), the step-down ratio of the proposed driver is double that of the buck driver, which is applicable in the field of high step-down applications.

C. Voltage Stresses of the Switching Devices

The voltage stress of switch S_1 , $U_{stress-S1}$, and the voltage stress of diode D_1 , $U_{stress-D1}$, can be derived as:

$$U_{stress-S1} = U_{stress-D1} = U_{in} - U_{c1} \quad (14)$$

The voltage stress of switch S_2 , $U_{stress-S2}$, and the voltage stress of diode D_2 , $U_{stress-D2}$, can be obtained as:

$$U_{stress-S2} = U_{in} \quad (15)$$

$$U_{stress-D2} = U_{c1} \quad (16)$$

From (12) to (16), when m_1 and m_2 are equal, the voltage stresses of switch S_1 , diodes D_1 and D_2 are half the input voltage U_{in} , which means that switches and diodes with a

lower nominal voltage can be selected and higher efficiency can be expected. However, the maximum voltage across switch S_2 is the input voltage U_{in} when S_1 is ON and S_2 is OFF.

D. Current Stresses of the Switching Devices

The current stress of switch S_1 , $I_{stress-S1}$, is equal to the maximum value of i_{i1} . The current stresses of switch S_2 and diode D_2 , which are denoted as $I_{stress-S2}$ and $I_{stress-D2}$ respectively, are equal to the maximum value of i_{i2} . They are represented as follows:

$$I_{stress-S1} = I_{LED} + \frac{m_1 U_{LED}}{2L_1} (1-D) T_S \quad (17)$$

$$I_{stress-S2} = I_{stress-D2} = I_{LED} + \frac{m_2 U_{LED}}{2L_2} (1-D) T_S \quad (18)$$

where U_{LED} and I_{LED} are the nominal voltage and nominal current of the LED, respectively.

However, the current stress of diode D_1 , $I_{stress-D1}$, is not equal to the maximum value of i_{i1} . In stage 3, described in section III, the current through diode D_1 is the sum of i_{i1} and i_{i2} . Therefore, $I_{stress-D1}$ is absolutely greater than $I_{stress-S1}$. The detail derivation of $I_{stress-D1}$ is given in the Appendix, and the expression is derived as (A3).

E. Voltage Ripple of U_{c1}

The charging or discharging charge in one switching period, Q_{c1} , is represented as:

$$Q_{c1} = I_{LED} D T_S \quad (19)$$

Therefore, the peak-to-peak ripple of voltage U_{c1} , denoted as ΔU_{c1} , is derived as:

$$\Delta U_{c1} = \frac{I_{LED} D T_S}{C_1} \quad (20)$$

V. HIGH STEP-DOWN N -CHANNEL DRIVER

Based on the method described in section II, a high step-down N -channel driver is derived, as shown in Fig.8. The output current auto-balance and the high step-down ratio characteristics are analyzed in this section based on assumptions similar to those described in section III. It is worth noting that the driving signals of S_1, S_2, \dots, S_N , are interleaved with a $360^\circ/N$ phase shift and the duty cycle D , is smaller than $1/N$.

A. Current Auto-balance Characteristic

Applying the ampere-second balance requirement on C_1 ,

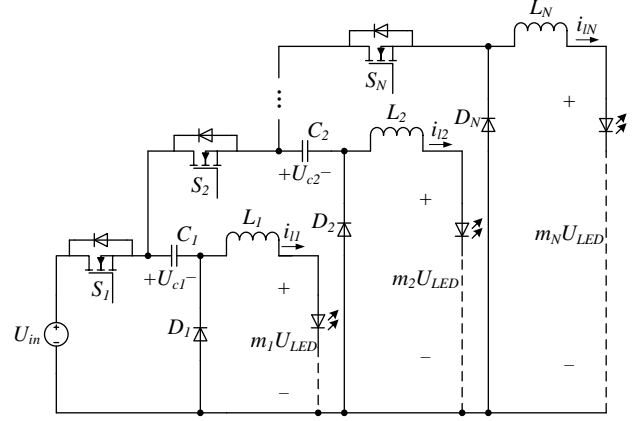


Fig. 8. High step-down N -output driver.

C_2, \dots, C_N , the following equation is deduced:

$$I_{i1} = \dots I_{ii} = \dots I_{iN} \quad (21)$$

That is to say, the dc values of $i_{i1}, i_{i2}, \dots, i_{iN}$ are equal to only one current close-loop control circuit, which is fully appreciated in driving multiple strings of LEDs.

B. Step-down Ratio

Define M_i as the ratio of $m_i U_{LED}$ and U_{in} , and M_{Ci} as the ratio of U_{Ci} and U_{in} , and they are represented as:

$$M_i = \frac{m_i U_{LED}}{U_{in}} \quad (22)$$

$$M_{Ci} = \frac{U_{Ci}}{U_{in}} \quad (23)$$

where i can be $1, 2, \dots, N$.

According to the voltage-second balance requirement of L_1 , the following equation is deduced:

$$D(U_{in} - U_{c1} - m_1 U_{LED}) = (1-D) m_1 U_{LED} \quad (24)$$

Similarly, according to the voltage-second balance requirement of L_i , where i may be equal to $2, 3, \dots, N-1$, the following equation is deduced:

$$D(U_{Ci-1} - U_{Ci} - m_i U_{LED}) = (1-D) m_i U_{LED} \quad (25)$$

Finally, according to the voltage-second balance requirement of L_n :

$$D(U_{Cn-1} - m_n U_{LED}) = (1-D) m_n U_{LED} \quad (26)$$

From (24) to (26), the following equations are deduced:

$$\sum_{l=1}^N M_l = D \quad (27)$$

$$M_{Ci} = 1 - \frac{1}{D} \sum_{l=1}^i M_l \quad (28)$$

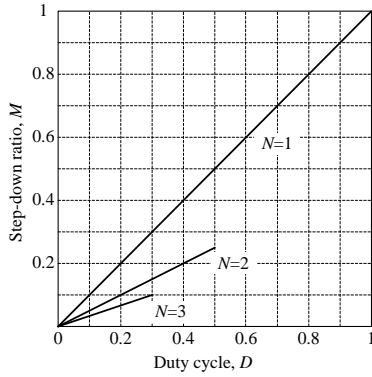


Fig. 9. Step-down ratio extension.

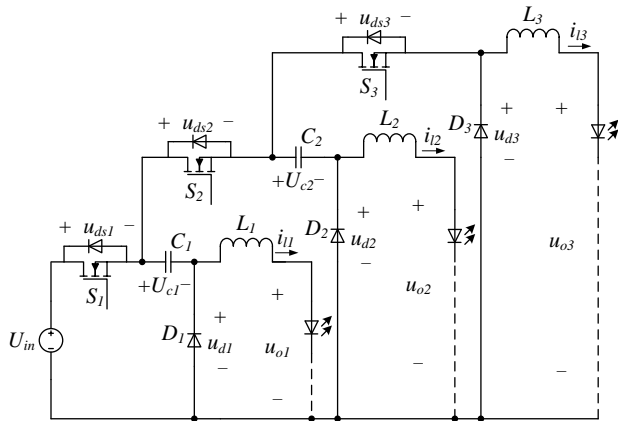


Fig.10. Experimental prototype circuit

In (28) i may be equal to 1, 2, ..., $N-1$.

When the number of LEDs for each string is equal, the output voltages are equal and the step-down ratio M can be represented as:

$$M = M_1 = \dots M_i = \dots M_n = \frac{D}{N} \quad (29)$$

$$N \leq \sqrt{\frac{U_{in}}{U_o}} \quad (30)$$

From (29), an extremely small duty cycle can be avoided by choosing N properly and the step-down ratio extension is shown in Fig.9. In addition, the channel is limited to (30).

VI. EXPERIMENTAL RESULTS

In order to confirm the feasibility of the proposed high step-down driver, an experimental prototype circuit, as shown in Fig.10, has been built. The input voltage U_{in} is 400V; the nominal current of LED I_{LED} is 350mA; the number of 1W LEDs per string is ten; the switching frequency f_s is 150kHz;

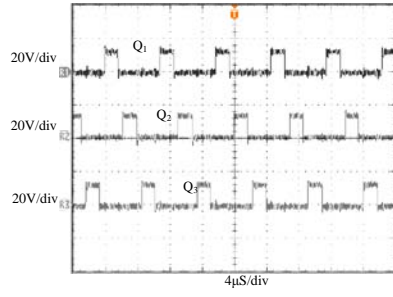
L_1, L_2 and L_3 are 1.5mH, C_1, C_2 and C_3 are equal to 0.1 μ F; S_1, S_2 and S_3 are IRFP460; D_1, D_2 and D_3 are MUR1640, and the control chip is a ISL6558 from Intersil. The isolated driver for S_1, S_2 and S_3 is based on a high speed MOSFET gate drive optocoupler (FOD3180).

The experimental results are shown in Fig.11. The gate signals of switches S_1, S_2 and S_3 , denoted as Q_1, Q_2 and Q_3 , are shown in Fig. 11(a). They are interleaved with a 120° phase shift and the duty cycle D is around 0.3. Fig. 11(b) shows the waveforms of i_{l1}, i_{l2} and i_{l3} . Their average values are exactly equal to 350mA only by sampling i_{l1} to realize the current close-loop control. The waveforms of the voltage across C_1 and C_2 , denoted as U_{c1} and U_{c2} , are shown in Fig. 11(c). Their dc values are approximately two thirds and one third of the input voltage U_{in} respectively as predicted by (28). Fig. 11(d) shows the voltage waveforms across S_1, S_2 and S_3 , which are denoted as u_{ds1}, u_{ds2} and u_{ds3} , respectively. It is clear that the voltage stress of switch S_1 is about one third of the input voltage U_{in} . When S_1 is ON and S_2 is OFF, the voltage across S_2 reaches its maximum value, which is about two thirds of the input voltage. When S_2 is ON and S_3 is OFF, S_3 bears the maximum voltage of two thirds of the input voltage. The voltage waveforms on diodes D_1, D_2 and D_3 , denoted as u_{d1}, u_{d2} and u_{d3} respectively, are given in Fig. 11(e). Their maximum value is about one third of the input voltage, which is in accordance with the theoretical analysis. Fig. 11(f) shows the waveforms of i_{l1}, u_{o1}, i_{l2} and u_{o2} when the number of LEDs for the first output changes from ten to five. It is shown that i_{l2} is unchanged though the value of i_{l2} is not directly controlled by a current close-loop control circuit. The measured efficiency of the driver under different loads is shown in Fig.12. The highest efficiency is 87.5%.

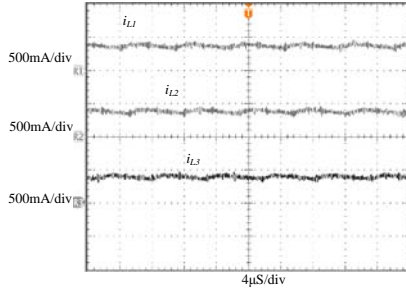
VII. CONCLUSION

A high step-down multiple-output LED driver is introduced in this paper. The operation principle and steady state performance are analyzed and experimental results are given. They show the following potential virtues related to the proposed driver: 1) if the number of LEDs for each string is equal, the step-down ratio is $1/N$ that of the Buck driver, where N means the number of outputs, which is appreciated in the field of high step-down applications where higher efficiency is expected; 2) because of the ampere-second balance requirement of the capacitors, the currents for each of the outputs are identical automatically if the duty cycle is the same, thus only one current close-loop control circuit is needed; 3) the voltage stress of the switches is lower than that of the Buck driver, thus low voltage switches are suitable and higher efficiency is possible. Based on the above, the

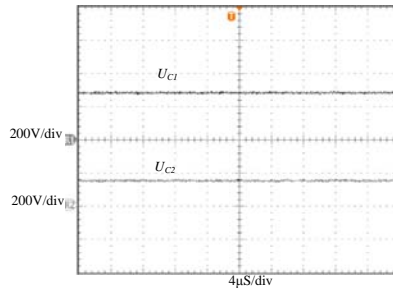
proposed driver is suitable in the field of LED lighting applications.



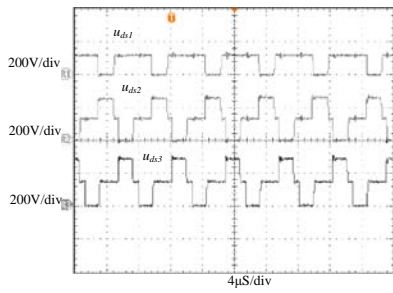
(a)



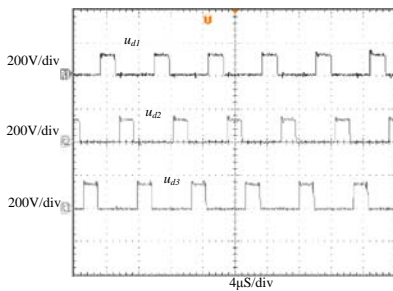
(b)



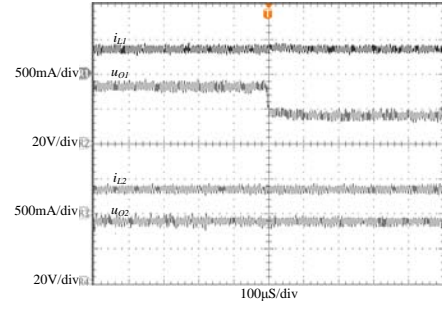
(c)



(d)



(e)



(f)

Fig. 11. Experimental waveforms. (a) Q_1 , Q_2 , Q_3 . (b) i_{L1} , i_{L2} and i_{L3} . (c) U_{c1} and U_{c2} . (d) u_{ds1} , u_{ds2} , u_{ds3} . (e) u_{dl1} , u_{dl2} , u_{dl3} . (f) i_{L1} , u_{o1} , i_{L2} , u_{o2} .

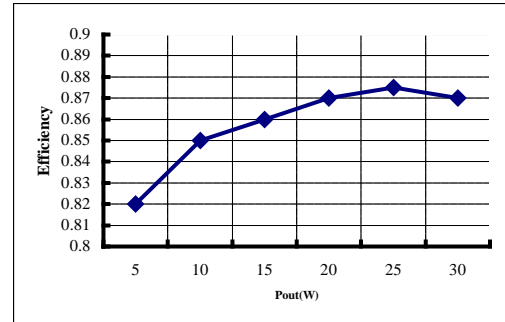


Fig. 12. The measured efficiency at different loads.

APPENDIX DERIVATION OF $I_{STRESS-D1}$

Referring to Fig.6, consider the moment that switch S_1 is gated ON as the starting point of the time period so that t_0 is assumed to be zero. Currents i_{L1} and i_{L2} during the following switching period can be derived by the following equations:

$$i_{L1} = \begin{cases} I_{LED} - \frac{m_1 u_{LED}}{2L_1} (1-D)T_s \\ + \frac{(m_1 - m_2 - m_1 D)u_{LED}}{DL_1} t \quad (0 < t \leq DT_s) \\ I_{LED} + \frac{m_1 u_{LED}}{2L_1} (1-D)T_s \\ - \frac{m_1 u_{LED}}{L_1} (t - DT_s) \quad (DT_s < t \leq T_s) \end{cases} \quad (A1)$$

$$i_{L2} = \begin{cases} I_{LED} + \frac{m_2 u_{LED}}{2L_2} DT_s - \frac{m_2 u_{LED}}{L_2} t \\ \quad \left(0 < t \leq \frac{T_s}{2}\right) \\ I_{LED} - \frac{m_2 u_{LED}}{2L_2} (1-D)T_s \\ + \frac{m_2 u_{LED}}{DL_2} (1-D) \left(t - \frac{T_s}{2}\right) \\ \quad \left(\frac{T_s}{2} < t \leq \frac{T_s}{2} + DT_s\right) \\ I_{LED} + \frac{m_2 u_{LED}}{2L_2} (1-D)T_s \\ - \frac{m_2 u_{LED}}{L_2} \left(t - \frac{T_s}{2} - DT_s\right) \\ \quad \left(\frac{T_s}{2} + DT_s < t \leq T_s\right) \end{cases} \quad (A2)$$

The current stress of diode D_1 , $I_{STRESS-D1}$, can be derived by the following equation:

$$\begin{aligned}
& I_{\text{stress-D1}} \\
& = \max \left\{ \begin{aligned} & i_{n1}(DT_s), i_{n1}\left(\frac{T_s}{2}\right) + i_{n2}\left(\frac{T_s}{2}\right) \\ & i_{n1}\left(\frac{1+2D}{2}T_s\right) + i_{n2}\left(\frac{1+2D}{2}T_s\right) \end{aligned} \right\} \\
& = \max \left\{ \begin{aligned} & I_{LED} + \frac{m_1 U_{LED}(1-D)T_s}{2L_1} \\ & 2I_{LED} + \frac{m_1 U_{LED}DT_s}{2L_1} - \frac{m_2 U_{LED}(1-D)T_s}{2L_2} \\ & 2I_{LED} - \frac{m_1 U_{LED}DT_s}{2L_1} + \frac{m_2 U_{LED}(1-D)T_s}{2L_2} \end{aligned} \right\} \quad (A3)
\end{aligned}$$

ACKNOWLEDGMENT

Project Supported by National Natural Science Foundation of China (50907076), Scientific Research Foundation of SKL of Power Transmission Equipment & System Security and New Technology (2007DA10512710202), The International S & T Cooperation Program of China (ISTCP) (2010DFA72250).

REFERENCES

- [1] E. F. Schubert, *Light-emitting Diodes*, 2nd ed. Cambridge, U.K.: Cambridge Univ. Press, 2006.
- [2] M. R. Krames, O. B. Shchekin, R. Mueller-Mach, G. O. Mueller, L. Zhou, G. Harbers, and M. G. Craford, "Status and future of high-power light emitting diodes for solid-state lighting," *J. Display Technol.*, Vol. 3, No. 2, pp. 160-175, Jun. 2007.
- [3] Y. Wang, "On the present status, developing opportunities and suggestions about China's semiconductor lightings industry," International Forum on LED & Semiconductor Lighting, pp. 130-136, 2004.
- [4] D. A. Steigerwald, J. C. Bhat, D. Collins, R. M. Fletcher, M. O. Holcomb, M. J. Ludowise, P. S. Martin, and S. L. Rudaz, "Illumination with solid state lighting technology," *IEEE J. Sel. Topics Quantum Electron.*, Vol. 8, No. 2, pp. 310-320, Mar. 2002.
- [5] H. Van Der Broeck, G. Sauerlander, M. Wendt, "Power driver topologies and control schemes for LEDs," in *Proc. APEC*, pp. 1319-1325, 2007.
- [6] E. Mineiro Sa, F. L. M. Antunes, A. J. Perin, "Low cost self-oscillating ZVS-CV driver for power LEDs," in *Proc. PESC*, pp. 4196-4201, 2008.
- [7] J. Patterson and R. Zane, "Series input modular architecture for driving multiple LEDs," in *Proc. PESC*, pp. 2650-2656, 2008.
- [8] J. Cardes'in, J. Ribas, J. Garc'ia-Garc'ia, M. Rico-Secades, A. J. Calleja, E. L'opez Corominas, and M. A. Dalla Costa, "LED permanent emergency lighting system based on a single magnetic component," *IEEE Trans. Power Electron.*, Vol. 24, No. 35, pp. 1409-1416, May 2009.
- [9] B. Wang, X. Ruan, and K. Yao, "A method of reducing the peak to average ratio of LED Current for Electrolytic Capacitor-less AC-DC Drivers," *IEEE Trans. Power Electron.*, Vol. 25, No. 3, pp. 592-601, Mar. 2010.
- [10] L. Gu, X. Ruan, M. Xu, and K. Yao, "Means of eliminating electrolytic capacitor in AC/DC power supplies for LED lightings," *IEEE Trans. Power Electron.*, Vol. 24, No. 5, pp. 1399-1408, May 2009.
- [11] W.-K. Lun, K. H. Loo, S.-C. Tan, Y. M. Lai, and C. K. Tse, "Bilevel Current Driving Technique for LEDs," *IEEE Trans. Power Electron.*, Vol. 24, No. 12, pp.2 920-2932, Dec. 2009.
- [12] K. H. Loo, W.-K. Lun, S.-C. Tan, Y. M. Lai, and C. K. Tse, "On driving techniques for LEDs: Toward a generalized methodology," *IEEE Trans. Power Electron.*, Vol. 24, No. 12, pp. 2967-2976, Dec. 2009.
- [13] S. Y. Ron Hui, S. N. Li, X. H. Tao, W. Chen, and W. M. Ng, "A novel passive offline LED driver with long lifetime," *IEEE Trans. Power Electron.*, Vol. 25, No. 10, pp. 2665-2672, Oct. 2010.
- [14] Y. Hu and M. M. Jovanovi'c, "LED driver with self-adaptive drive voltage," *IEEE Trans. Power Electron.*, Vol. 23, No. 6, pp. 3116-3125, Nov. 2008.
- [15] M. Doshi and R. Zane, "Digital architecture for driving large LED arrays with dynamic bus voltage regulation and phase shifted PWM," in *Proc. APEC*, pp. 287-293, 2008.
- [16] K. Hwu, Y. Yau, and L. Lee, "Powering LED using high-efficiency SR flyback converter," in *Proc. APEC*, pp. 563-569, 2009.
- [17] G. Carraro, "Solving high-voltage off-line HB-LED constant-current control-circuit issues," in *Proc. APEC*, pp. 1316-1318, 2007.
- [18] M. Rico-Secades, J. Garcia, J. Cardesin, A.J. Calleja, "Using tapped-inductor converters as LED drivers," in *Proc. IAS*, pp.1794-1800, 2006.
- [19] Q. Zhao and F. C. Lee, "High-efficiency, high step-up DC-DC converters," *IEEE Trans. Power Electron.*, Vol. 18, No. 1, pp.65-73, Jan. 2003.
- [20] T.-F. Wu, Y.-S. Lai, J.-C. Hung, and Y.-M. Chen, "Boost converter with coupled inductors and buck-boost type of active clamp," *IEEE Trans. Ind. Electron.*, Vol. 55, No. 1, pp. 154-162, Jan. 2008.
- [21] W. Li and X. He, "A family of interleaved DC-DC converters deduced from a basic cell with winding-cross-coupled inductors (WCCIs) for high step-up or step-down conversions," *IEEE Trans. Power Electron.*, Vol. 23, No. 4, pp. 1791-1801, Jul. 2008.
- [22] Q. Hu and R. Zane, "LED driver circuit with series-input-connected converter cells operating in continuous conduction mode," *IEEE Trans. Power Electron.*, Vol. 25, No. 3, pp. 574-582, Mar. 2010.
- [23] R. Giri, V. Choudhary, R. Ayyanar, and N. Mohan, "Common-duty-ratio control of input-series connected modular DC-DC converters with active input voltage and load-current sharing," *IEEE Trans. Ind. Appl.*, Vol. 42, No. 4, pp. 1101-1111, Jul./Aug. 2006.
- [24] V. Choudhary, E. Ledezma, R. Ayyanar, and R. M. Button, "Fault tolerant circuit topology and control method for input-series and output-parallel modular DC-DC converters," *IEEE Trans. Power Electron.*, Vol. 23, No. 1, pp. 402-411, Jan. 2008.
- [25] P. T. Krein and J. W. Kimball, "Series-parallel approaches and clamp methods for extreme dynamic response with advanced digital loads," in *Proc. WCPE*, pp. 85-88, 2004.
- [26] J. W. Kimball, J. T. Mossoba, and P. T. Krein, "Control technique for series input-parallel output converter topologies," in *Proc. PESC*, pp. 1441-1445, 2005.
- [27] J. W. Kimball, J. T. Mossoba, and P. T. Krein, "A stabilizing, high performance controller for input series-output parallel converters," *IEEE Trans. Power Electron.*, Vol. 23, No. 3, pp. 1416-1427, May 2008.



Quanming Luo was born in Chongqing, China, in 1976. He received his B.S., M.S. and Ph.D. in Electrical Engineering from Chongqing University, in 1999, 2002, and 2008, respectively. He was with the Emerson Network Power CO., Ltd., Shenzhen, China, as a Research and Development Engineer from 2002 to 2005. Since 2005, he has been with the College of Electrical Engineering, Chongqing University, where he is currently an Associate Professor. He is the author or coauthor of more than 20 papers in journals or conference proceedings. His current research interests include LED driving systems, communication power systems, power harmonic suppression, and power conversion systems in electrical vehicles.



Binxin Zhu was born in Anhui, China, in 1986. He received his B.S. in Electrical Engineering from the Hefei University of Technology, Hefei, China, in 2008. He is currently working toward his Ph.D. in the College of Electronic Engineering, Chongqing University, Chongqing, China. His current research interests include the development of switching mode power supplies, LED driving circuits and thermal management of electronic components.



Weiguo Lu was born in ZheJiang province, China, in 1977. He received his B.S., M.S. and Ph.D. in Electrical Engineering from Chongqing University, Chongqing, China, in 2000, 2003 and 2008, respectively. He is currently an Associate Professor in the College of Electrical Engineering, Chongqing University, Chongqing, China. He is the author or coauthor of more than 20 papers in journals or conference proceedings. His current research interests include the stability analysis and control technology of switching power converters.



Luowei Zhou was born Dujiangyan, China, in 1954. He received his B.S., M.S., and Ph.D. in Electrical Engineering from Chongqing University, Chongqing, China, in 1982, 1988, and 2000, respectively. Since 1982, he has been with the College of Electrical Engineering, Chongqing University, where he is currently a Full Professor. He was a Visiting Professor at the University of California, Irvine, from September 1998 to August 1999. He is the author or coauthor of more than 70 papers. His current research interests include the analysis and control of power electronics circuits, realization of active power filters, power factor correction techniques, and high-frequency power conversion. Prof. Zhou is the Vice President of the China Society of Power Supply.